

Visual Studio Team System 2008

Architecture Edition



Oleg Sych

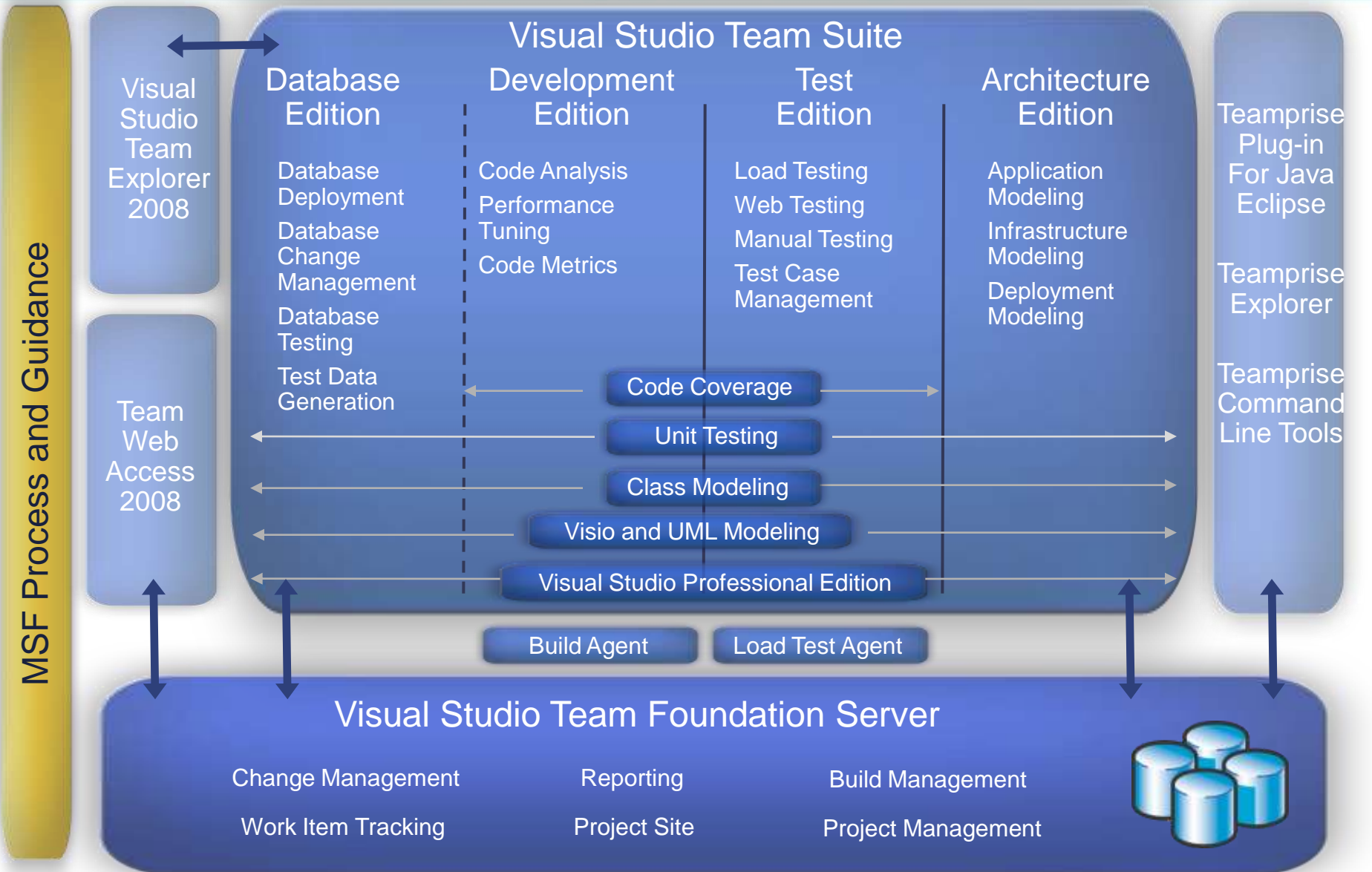
Senior Lead Consultant

 **Catapult Systems**

Enabling Business Through Technology®

Microsoft
GOLD CERTIFIED
Partner

Visual Studio Team System 2008



Application Development Lifecycle



Infrastructure Architect



Solution Architect



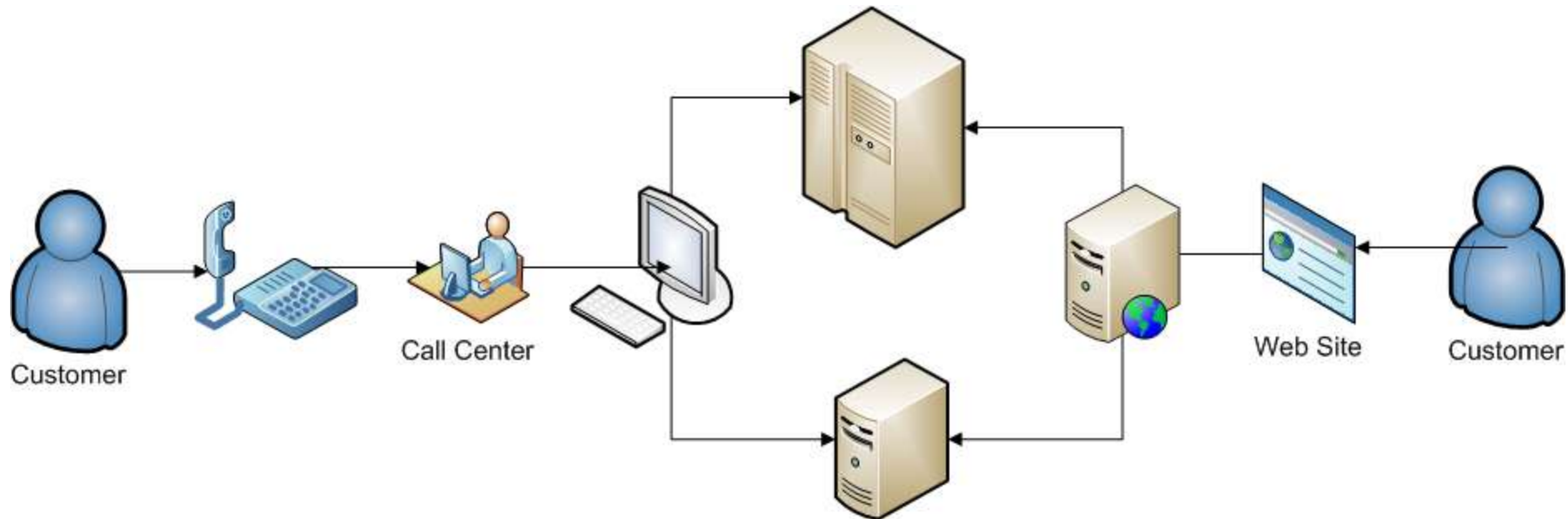
Software Architect

Order Entry System

As-Is



To-Be

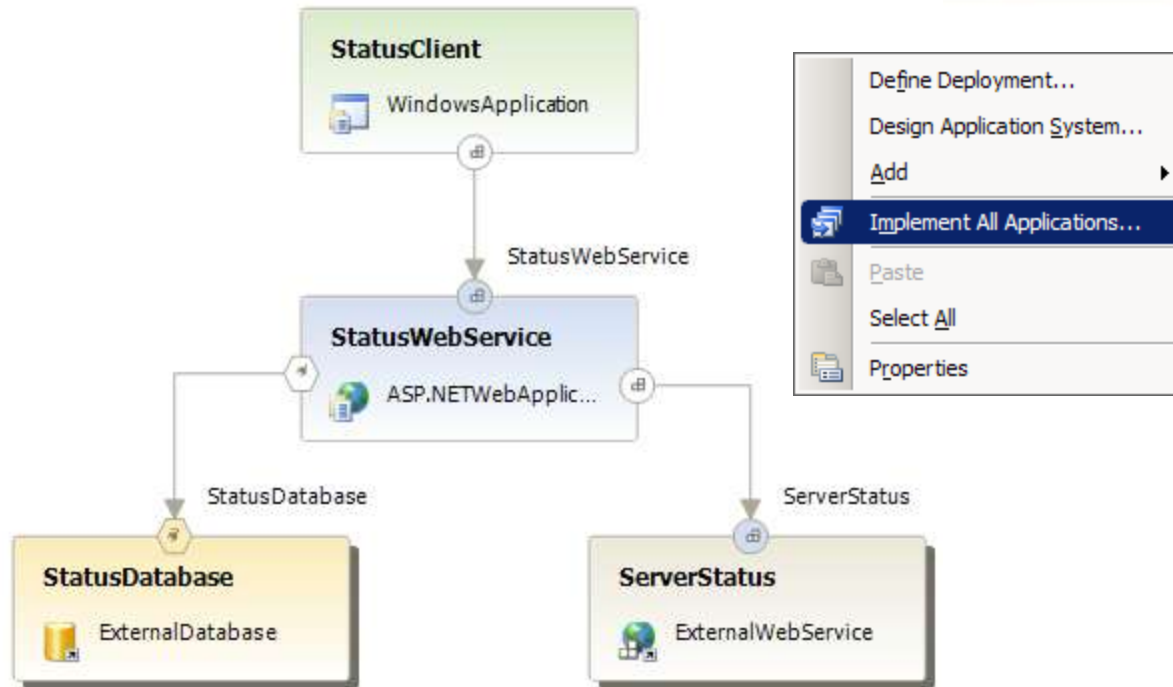




Application Designer (Demo)

Toolbox

- General Designer
 - Pointer
 - Connection
 - Comment
- Endpoints
 - Pointer
 - .NETWebServiceEndpoint
 - WebContentEndpoint
 - GenericEndpoint
- Applications
 - Pointer
 - WindowsApplication
 - ASP.NETWebService
 - ASP.NETWebApplication
 - OfficeApplication
 - ExternalWebService
 - ExternalDatabase
 - BizTalkWebService
 - GenericApplication
- General



- Define Deployment...
- Design Application System...
- Add
- Implement All Applications...**
- Paste
- Select All
- Properties

Settings and Constraints

- Logical Server Constraints
 - IISWebServer
 - Operating System
 - User Defined
- Application Settings
 - Directory
 - Configuration
 - WebApplication
 - Custom

StatusWebService supports Operating System

- WindowsServer 2008
- WindowsVista
- Windows2003
- Windows2000
- WindowsXP

Product type:

- Server
- DomainController

Suite type:

- DataCenter
- Enterprise
- Personal

Service pack

Build number: 3790

Version: 0 . 0

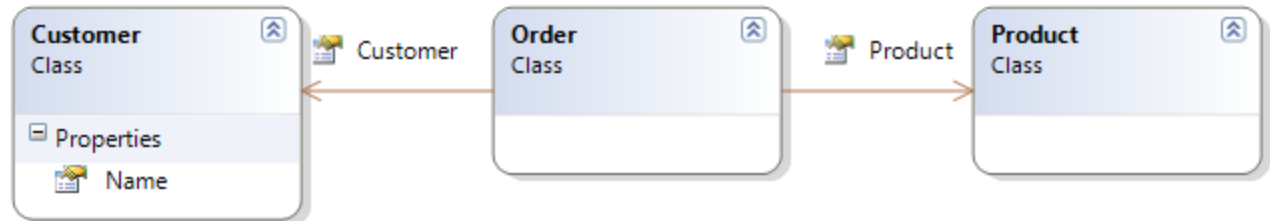
.NET Framework version: 3.5.0.0

Constraints the Operating System configuration required to host this application.

Class Designer (Demo)

Toolbox

- Class Designer
 - Pointer
 - Class
 - Enum
 - Interface
 - Abstract Class
 - Struct
 - Delegate
 - Inheritance
 - Association
 - Comment
 - General



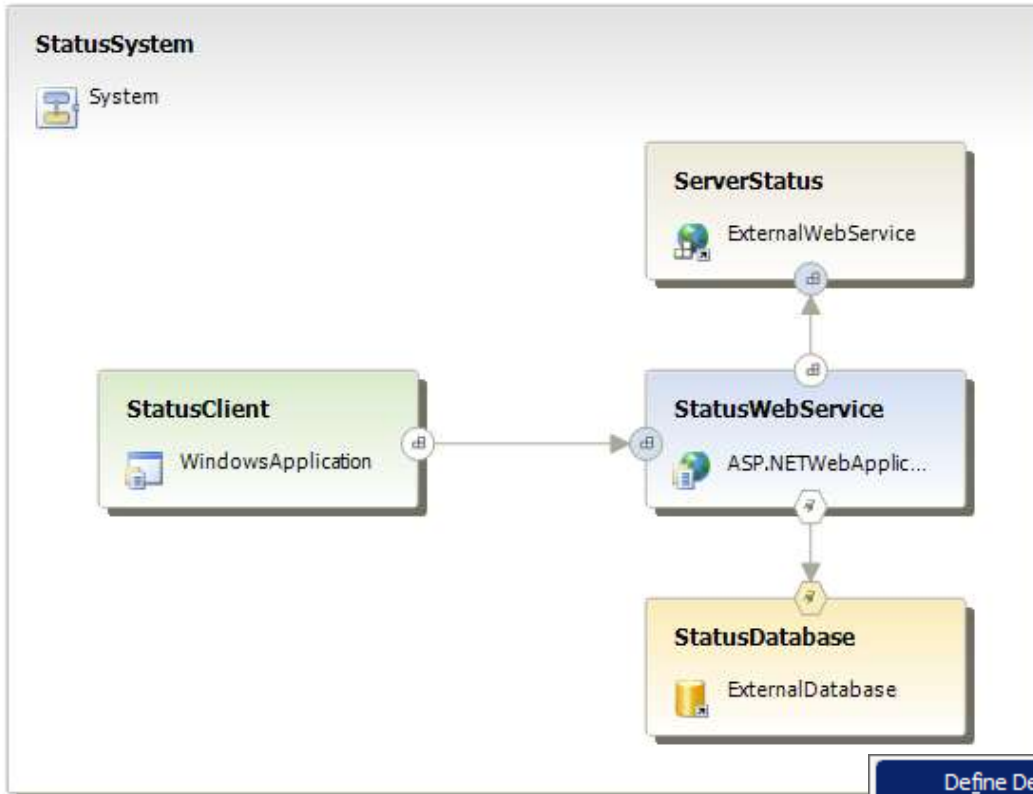
Class Details - Customer

Name	Type	Modifier	Summary	Hide
Methods				
... <add method>				
Properties				
Name	string	public		<input type="checkbox"/>
... <add property>				
Fields				
... <add field>				
Events				
... <add event>				

System Designer (Demo)

Toolbox

- General Designer
 - Pointer
 - Connection
 - Comment
- Endpoints
 - Pointer
 - .NETWebServiceEndpoint
 - WebContentEndpoint
 - GenericEndpoint
- Applications
 - Pointer
 - WindowsApplication
 - ASP.NETWebService
 - ASP.NETWebApplication
 - OfficeApplication
 - ExternalWebService
 - ExternalDatabase
 - BizTalkWebService
 - GenericApplication
- Systems
 - Pointer
 - Blank System
 - .NETWebService System
- General



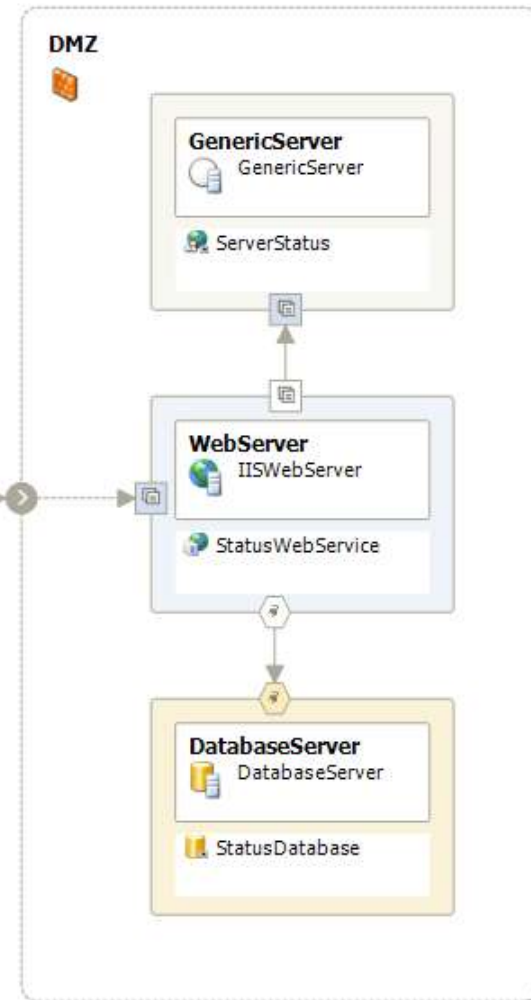
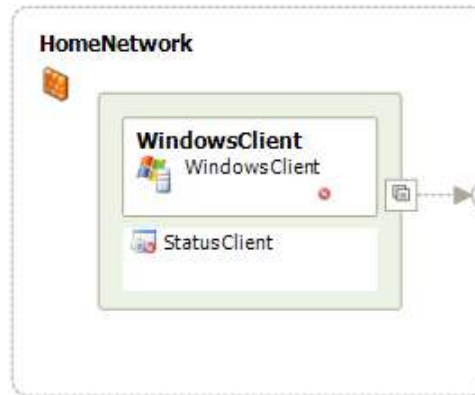
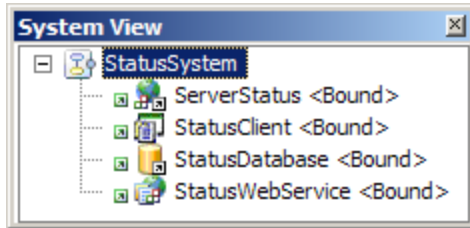
System View

- Applications
 - ServerStatus
 - StatusClient
 - StatusDatabase
 - StatusWebService
- Systems

Define Deployment...

- Add
- Settings and Constraints
- Create .NET Web Service Endpoint from WSDL...
- Paste
- Copy Image
- Select All
- Properties

Deployment Designer (Demo)



Error List

0 Errors 1 Warning 0 Messages

	Description	File
1	"The version of Microsoft .NET Framework that the application 'StatusClient' targets does not match the version of the common language runtime expected on host 'WindowsClient'.	StatusSystem1.dd



Resources

- MSDN
<http://msdn.microsoft.com/teamsystem>
- Bill Gibson's Blog
<http://blogs.msdn.com/billgibson>
- [Architecture Edition Power Tools](#)
- Presentation Slides
<http://www.olegpsych.com/presentations>